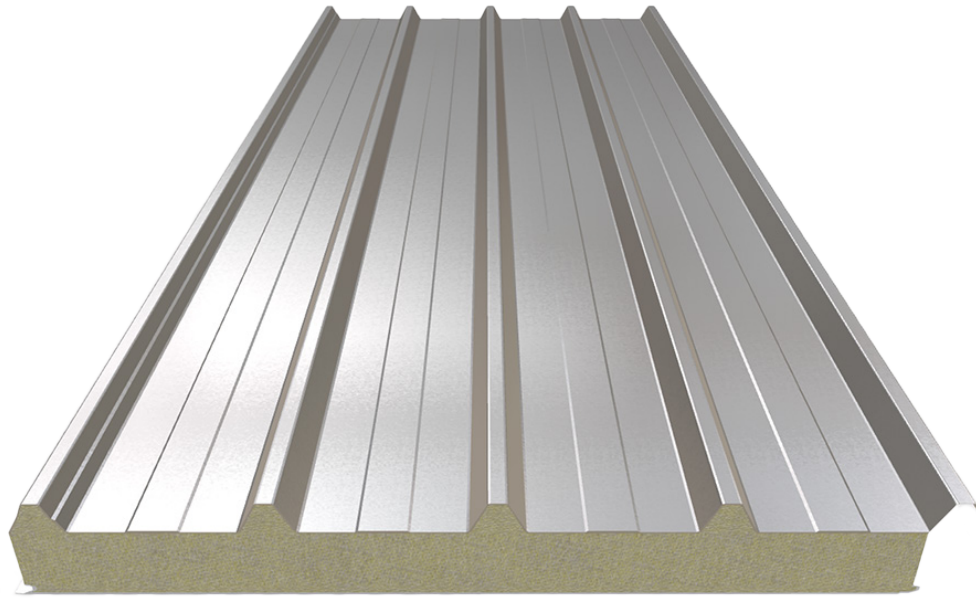




ThermaMagma COV EchoLock

Self-supporting insulated roof panels with an external trapezoidal metal facing, an internal perforated metal facing and a stone wool core, suitable for roofing applications on buildings requiring enhanced acoustic insulation

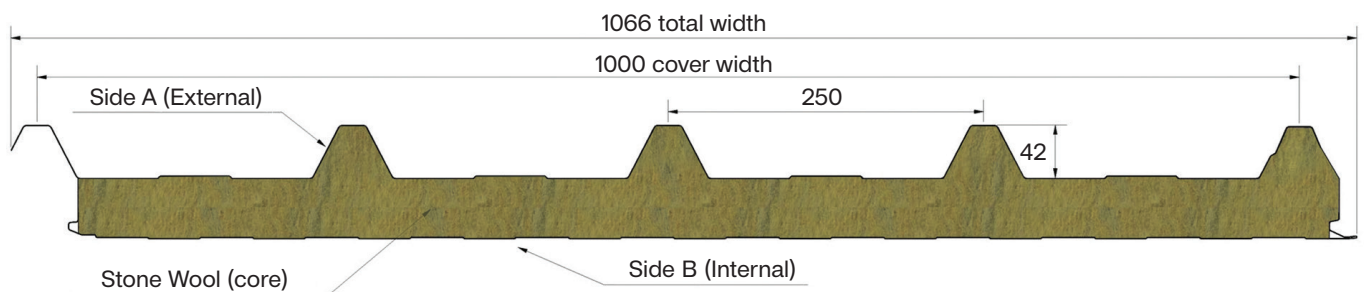


Available in

Effective cover width 1,000 mm | Nominal thickness from 50 mm to 220 mm

Bespoke lengths from 2 m to 14 m, depending on project requirements

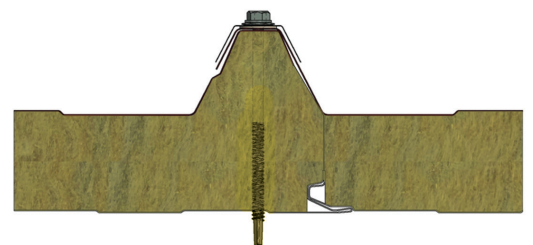
5-rib trapezoidal profile with a profile height of 42 mm and a pitch of 250 mm



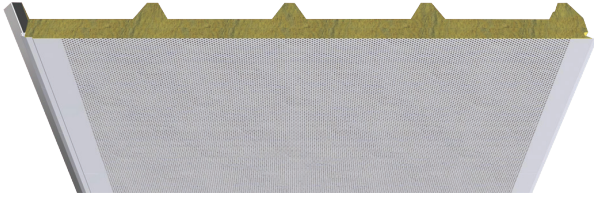
They are fixed to the supporting structure using the standard visible fixing method.

Designed for roofs with a minimum slope of 10%.

In this case, the panels must have a right-hand or left-hand side overlap, depending on the project specifications, with an overlap length ranging from 50 mm to 300 mm.



Internal facing profile option



Perforated

Internal sheet, either flat or with Box 83 (39-44) profiling, in perforated steel with an internal dustproof membrane. Indicatively, the perforated version features Ø3 mm holes at 5 mm centres, with an open area ratio of 28% of the total surface. Available in two colours: RAL 9005, to reduce reflection, and RAL 9002.

Technical Specifications

Panel nominal thickness	Panel weight	Thermal Transmittance	Sound reduction index Rw	
[mm]	[kg/m ²]	U [W/m ² .K]	Perforated-[dB]	
50	14,0	0,63	-	Panel weight and thermal transmittance were calculated based on: <ul style="list-style-type: none"> • Core density 100 kg/m³ • Core thermal conductivity 0.033 W/mK • Steel sheet thicknesses 0.50 / 0.50 mm • Coating SP
60	14,7	0,53	-	
80	17,1	0,40	-	
100	18,8	0,32	-	
120	21,0	0,27	38(-1;-4)	(Standards EN 14509 and EN 10211-2)
150	24,1	0,21	-	The sound reduction index was measured in accordance with EN ISO 140-3, and the rating was classified in accordance with EN ISO 717-1
200	29,3	0,16	-	
220	31,3	0,15	-	

Fire resistance indicators

Stone wool panels are classified in category A2-s1-d0. They do not spread fire, are non-combustible, produce very limited smoke, and do not generate flaming or non-flaming droplets/particles.

(Standards EN 13501-1 and EN 13501-2)