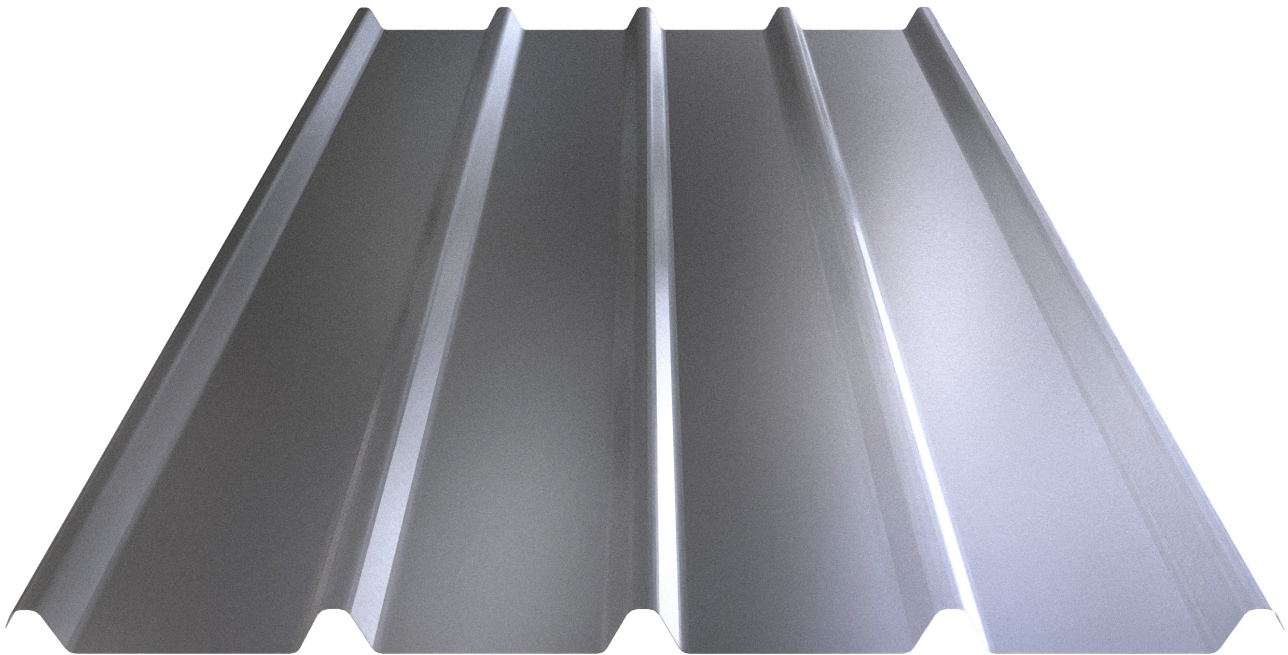


SkyLite COV 42/250

Self-supporting translucent polyester sheets with a 42/250 trapezoidal profile, suitable for creating natural daylighting zones or for roofing applications on all types of buildings

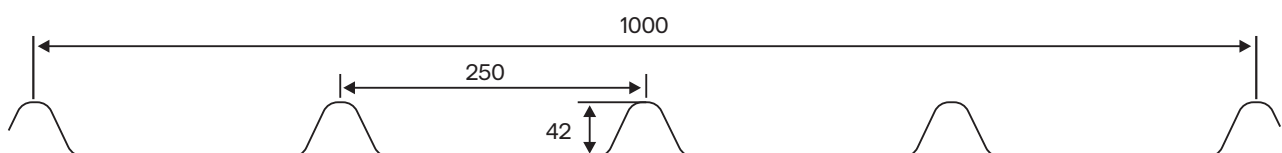


Available in

Effective cover width 1,000mm

Standard lengths up to 7m, depending on project requirements

42/250 trapezoidal profile



- It is compatible with trapezoidal metal sheets with a profile height of 42 mm and a pitch of 250 mm. Thanks to its dense ribbing, it offers excellent resistance to bending loads.
- Its side joint is designed to fit perfectly with trapezoidal metal sheets, ensuring excellent watertightness.
- It allows natural daylight to enter interior spaces, reducing the need for artificial lighting and improving the building's energy efficiency.
- It is available with MELINEX 301 protective film for enhanced protection against sunlight, UV radiation, acids and adverse weather conditions.

Technical Specifications

Specific weight	1,30 – 1,40 gr/cm ³
Light transmittance	85%
Operating temperature range	-40o+120o C
Expansion	9 – 25 x 10 – 6 mm/oC
Absorption	0,18 – 0,25 % mg/oC
Hardness	40 Barcol
Flash point	404,4 oC
Thermal conductivity coefficient (λ)	0,26 (W/mk)