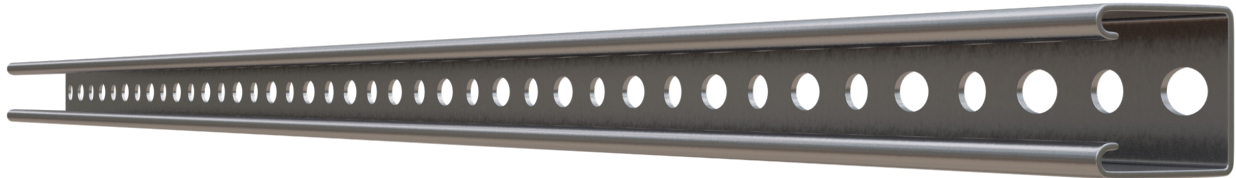


# MetaLite C 40.40

Thin-walled open C-sections used as secondary structural elements for the reinforcement, connection and lateral stabilisation of steel frames

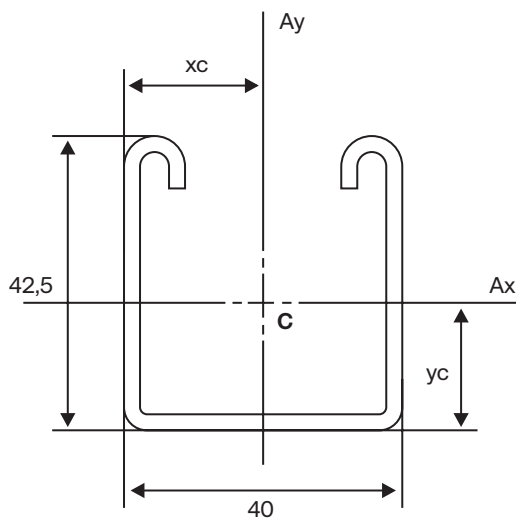


## Available in

Nominal thickness 2,00mm

Bespoke lengths up to 14m, depending on project requirements

Provision for holes  $\varnothing 12$  and  $\varnothing 12 \times 16$



**Thickness mm**

2,00

**Weight Kg/m**

1,85

The weight per linear metre was calculated taking into account:  
Steel density  $7850 \text{ kg/m}^3$

## Sheets

### Galvanised steel

(EN 10346 and EN 10143)

- **Steel grade:** S320GD και S350GD
- **Coating:** hot-dip galvanising, up to Z275  $\text{g/m}^2$  or up to AZ265  $\text{g/m}^2$  or up to ZM200  $\text{g/m}^2$
- **Nominal thickness:** from 1,50mm to 3,00 mm
- Without colour coating