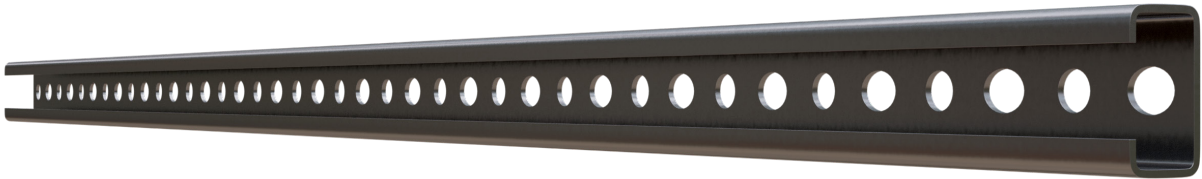


MetaLite C 20.40

Thin-walled open C-sections used as secondary structural elements for the reinforcement, connection and lateral stabilisation of steel frames

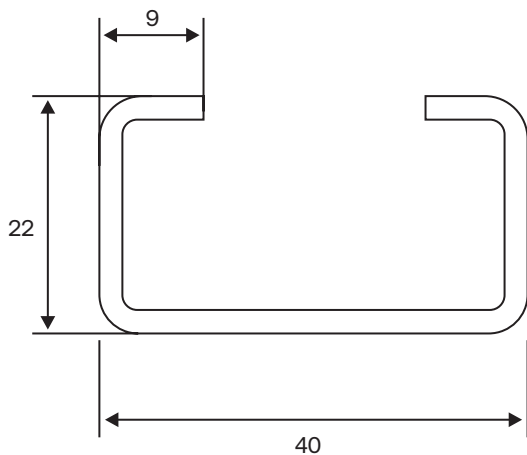


Available in

Nominal thickness 2,00mm

Bespoke lengths up to 14m, depending on project requirements

Provision for holes $\varnothing 12$ and $\varnothing 12 \times 16$



Thickness mm

2,00

Weight Kg/m

1,05

The weight per linear metre was calculated taking into account:
Steel density 7850 kg/m³

Sheets

Galvanised steel

(EN 10346 and EN 10143)

- **Steel grade:** S320GD και S350GD
- **Coating:** hot-dip galvanising, up to Z275 g/m² or up to AZ265 g/m² or up to ZM200 g/m²
- **Nominal thickness:** from 1,50mm to 3,00 mm
- Without colour coating